

Sabre Sailing Association of Tasmania
in conjunction with
Port Esperance Sailing Club Easter Regatta

EIGHTY OPTIONS Tasmanian Championships

2nd – 4th April 2010

SAILING INSTRUCTIONS

1. RULES:

- 1.1 The regatta will be governed by the current rules as defined in The Racing Rules of Sailing 2009-2012 (RRS).
- 1.2 The special regulations of Yachting Australian will apply.
- 1.3 The rules of the Sabre Class of Australia will apply.
- 1.4 RRS 61.1(a) is amended by deleting sub-paragraphs (1) and (2).
- 1.5 All sailors shall wear approved buoyancy aids at all times afloat. Failure to comply with this instruction may result in disqualification without protest. This changes RRS 63.1.

2. NOTICES TO COMPETITORS:

Notices to competitors will be posted on the official notice board located in the clubhouse of the Port Esperance Sailing Club (PESC).

3. CHANGES IN SAILING INSTRUCTIONS:

Any change to the sailing instructions will be posted before 0830 on the day it will take effect, or at least one hour before the scheduled warning signal for the first race in which it will take effect, except that any change to the schedule of races will be posted by 1800 on the day before it will take effect.

4. SIGNALS MADE ASHORE:

- 4.1 Signals made ashore will be displayed on the flagpole on the deck of the PESC clubhouse.
- 4.2 Code flag "AP", Answering Pennant, with two sound signals, (one sound signal when lowered) means, "The race is postponed". The warning signal will be made not less than 30 minutes after "AP" is lowered. The time delay between lowering of AP and Warning signal of 30 minutes applies only when the signal is made ashore.

Boats are requested not to leave the shore until the signal is lowered.

- 4.3 Code flag "B" fully hoisted with one sound signal means "Protest time has begun". When lowered halfway it means, "There are less than 30 minutes remaining before protest time ends". When lowered, it means "Protest time has ended".

5. SCHEDULE OF EVENTS:

Race times listed are the earliest time of the warning signal.

- 5.1 Dates of Racing:

Date	Time	Event
Fri 2 Apr 2010	1230	Briefing in the marquee on the Dover Beach foreshore
	1325	Race 1 followed by Race 2 back-to-back
Sat 3 Apr 2010	1110	Race 3
	1330	Race 4 followed by Race 5 back-to-back
Sun 4 Apr 2010	0955	Race 6
	1325	Re-sail. If required

A trophy presentation will be held approximately one hour after the completion of the last race on the final day of the series.

- 5.2 It is intended that the leading yacht will complete each race in approximately 1 hour.
- 5.3 No warning signal will be made after 1600 hrs on Friday and Saturday. No warning signal will be made after 1530 hrs on Sunday.
- 5.4 When races are held back-to-back:
 - a) The warning signal for each succeeding race will be made as soon as practicable but not less than 5 minutes after the last boat has finished the previous race.
 - b) To alert boats that another race will be held soon, the postponement signal will be displayed for at least 4 minutes before a warning signal is displayed (down one minute before the warning signal).
 - c) Boats that have finished the first race of the day should remain in the vicinity of the committee boat but shall keep clear of the finishing line.

6. CLASS FLAG:

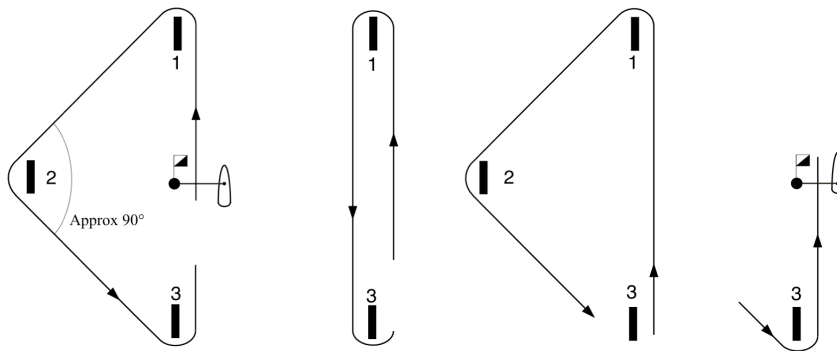
The class flag of the Sabre Sailing Association will be used.

7. RACING AREA

The racing area will be on Port Esperance adjacent to the Port Esperance Sailing Club.

8. THE COURSE:

Courses will be triangle, windward-leeward, triangle and windward to finish. The course may be shortened in accordance with RRS 32. The start/finish line will be located part way up the windward leg and will be approximately perpendicular to the imaginary line joining the windward and leeward marks. Except when starting or finishing, the start/finish line is not a mark of the course and may be sailed through without penalty.



Marks shall be passed in the following order: start-1-2-3 + 1-3 + 1-2 + 3-finish

9. MARKS:

Marks and replacement marks will be advised at briefing.

10. START:

The starting line will be between an orange shape on the start boat at the starboard end and the port end starting mark.

11. CHANGING COURSE AFTER THE START:

A change of course after the start will be signalled using code flag "C", although the new mark may not then be in position before the leading boat has begun the leg. A red or green flag will be flown to indicate whether the change of course will be to port or starboard. The change will be accompanied by periodic sound signals. This changes RRS 33. Any mark to be rounded after rounding the new mark may be relocated to maintain the original course configuration. When in a subsequent change of course a new mark is replaced, it will be replaced with an original mark.

12. THE FINISH:

- 12.1 The finishing line will be between a staff displaying an orange flag or shape on the race committee signal boat on the starboard end and the port-end finishing mark.

- 12.2 When the course is shortened at a mark, a race committee boat near the mark on the outside of the course will display code flag S and boats shall finish by sailing between the blue on - station flag flown by the committee boat and the mark.

13 TIME LIMIT

The time limit will be 90 minutes for the first boat. Boats failing to finish within 20 minutes after the first boat finishes will be scored Did Not Finish. This changes RRS 35.

14. PROTESTS:

Protest requirements are as specified by RRS 61 except where modified by these sailing instructions.

- 14.1 Protests by competitors must be lodged in writing with the race secretary or PRO. Protest time will end 60 minutes after the finish time of the last boat in the last race of each back-to-back set of races.

14.2 Protests will be heard in approximately the order of receipt as soon as possible.

14.3 Protest notices will be posted on the official notice board no later than 30 minutes after the end of protest time limit to inform competitors where and when there is a hearing in which they are parties or are named as witnesses. Those involved in a protest hearing must remain in the vicinity of the club until a time and date of the hearing is announced by the sailing committee.

14.4 RRS 66 is changed by adding the sentence: 'On the last day of racing, a *party* to the hearing may ask for a reopening no later than one hour after being informed of the decision.'

15. SCORING:

The Low-Point scoring system, Appendix A4 of the RRS will apply with a minimum of three (3) races completed to constitute a series. If 5 or 6 races are completed a boat's worst score is discarded. If less than 5 races are sailed, all races will count.

16. SIGN ON AND OFF DECLARATIONS:

All helmsmen intending to start in a race shall sign the starting roster at the marquee on the Dover Beach foreshore prior to the warning signal. All helmsmen must sign the finishing roster within 45 minutes after the finishing time of the last yacht of the last race in a group of back-to-back races. There will be a separate sign off sheet for each race. Each must be signed off in either the "all clear" or the "retired" column. Failure to comply with this requirement may lead to disqualification from that race.

17. SUPPORT BOATS

Team leaders, coaches and other support boats shall maintain a minimum distance of 100 metres from all competitors while racing and shall obey all instructions from official boats.

18 RADIO COMMUNICATION

A boat shall neither make nor receive radio or telephone communications while racing.

19. BRIEFING:

A briefing for competitors will be held at 1230 on Friday 2nd April 2010 at the marquee on the Dover Beach foreshore.

21. PRIZES:

Prizes will be awarded to the helmsperson of the following:

1st, 2nd and 3rd overall.

1st B Division (where applicable)

1st C Division (where applicable)

1st Junior

1st Female

Allocation of prizes in all categories and the allocation of 2nd and 3rd prizes remains at the discretion of the Sabre Sailing Association of Tasmania and is dependent on the number of boats racing in each category.